

www.dekuma.com



● 总公司——东莞
Head Office-Dongguan

● 生产基地——东莞、无锡
Production Base-Dongguan, Wuxi

■ 地区性服务中心——印度、土耳其、美国
Regional Service Centre-India, Turkey, USA

★ 销售、服务
Sales & Service Office

■ 研究中心——东莞
R&D Centre -Dongguan



德科摩橡塑科技(东莞)有限公司

DEKUMA RUBBER AND PLASTIC TECHNOLOGY(DONGGUAN)LTD.
(大同机械有限公司成员 Member of Cosmos Machinery Ltd.)

广东省东莞市东城区周屋工业区银珠路
Yinzhu Rd,Zhouwu Industrial Park,Dongcheng District,
Dongguan,Guangdong,China
Tel: +86-769-22667200 Fax: +86-769-22667227
E-mail: info@dekuma.com



Rubber Injection Moulding Machine 202404

DEKUMA

中国高端橡塑机械行业领导者

德国基因 中国智造

CHINESE CREATION OF GERMAN HERITAGE

#可信可靠, 德科摩造#
#DEKUMA: where Reliability is certified#

橡胶注射成型机

RUBBER INJECTION MOULDING MACHINE



德科摩橡塑科技(东莞)有限公司

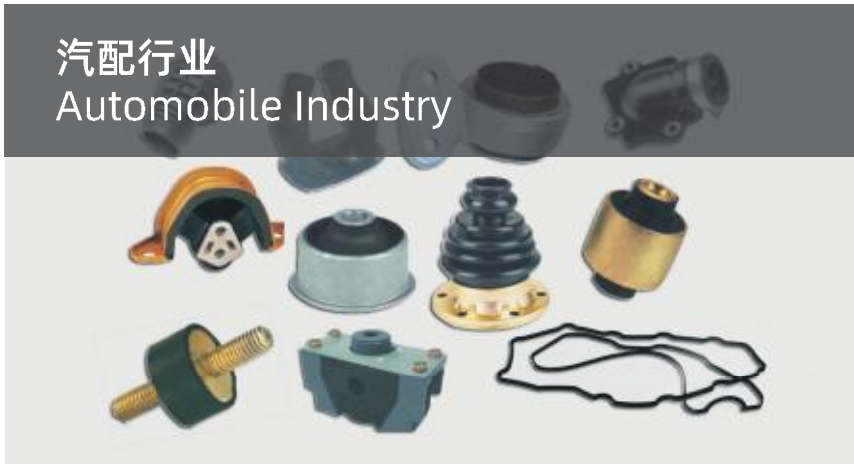
DEKUMA RUBBER AND PLASTIC TECHNOLOGY(DONGGUAN)LTD.
(大同机械有限公司成员 Member of Cosmos Machinery Ltd.)

CONTENTS

目录

汽配行业 Automobile Industry	P03-10
电力行业 Power Industry	P11-16
模具方案 Mould Solutions	P07-18
橡胶履带机 Rubber Track Production Line	P19-20
RH系列橡胶机密封圈专用机 RH Series Rubber Injection Machine Dedicated for Sealing Ring	P21-22
液态硅橡胶制品 Liquid Silicone Rubber Product	P23-24
客户方案 Solutions for Customers	P25-26
控制系统 Control System	P27-28
公司简介 Company Profile	P29-30

汽配行业
Automobile Industry



电力行业
Power Industry



橡胶履带
Rubber Track



其它行业
Other Industries





DKM-RV200



应用领域

DKM-RV系列橡胶注射机适用于天然橡胶(NR)、丁腈橡胶(NBR)、三元乙丙橡胶(EPDM)、丁基橡胶等原料, 经过注射模具成型技术而制造的橡胶制品, 广泛应用于汽车工业、电力工业、民用等领域, 如用于加工各种橡胶减震器、橡胶气缸垫、密封件、电缆接头、管接头等。

Applications

DKM-RV series are suitable for Natural Rubber(NR), Nitrile Butadiene Rubber(NBR), Ethylene Propylene Diene Monomer(EPDM), Isobutylene Isoprene Rubber, etc. DKM-RVSe series are applicable in automobile, electric power and civil industries, such as rubber vibration absorber cylinder cushions, sealing parts, cable connectors and pipe connectors, etc.

产品特点 / Features

- 德国技术专家参与优化设计的整个塑化系统, 其螺杆可适应各种不同胶料, 对于超高硬度胶料也有非凡表现。
- 注射系统采用特殊设计, 可快速拆卸注射贮料部分, 易于更换密封环和清理胶料。
- 进口抗压、耐高温双层隔热板可减少40%的能耗, 更可靠, 更节能。
- 合模油缸双重密封, 不易漏油。
- 采用美国高压泵及德国液压阀, 保证液压系统的稳定可靠。注射行程和锁模行程采用精度为0.05%的无接触式电子尺控制。
- Designing and optimizing of the plasticization system and injection system are led by German engineers, the screw can be suitable for various materials, excellent performance even for extra high hardness material.
- Particularly design for injection system can disassemble the accumulator quickly, facilitate to replace the seals and remove the material.
- Imported double-layer, High pressure and high temperature resistance thermal insulation plates reduce 40% energy consumption, much more energy saving and more reliable.
- Dual-seal clamping cylinder, avoid oil leakage.
- Adopting American high pressure pump and German hydraulic valve, ensure the stable and reliable hydraulic system.
- The injection stroke and clamping stroke adopt the world famous electronic ruler with accuracy of 0.05%.

机器参数 / Machine Specifications

项目 ITEM	单位 Unit	DKM-RV50	DKM-RV100	DKM-RV200	DKM-RV300	DKM-RV400	DKM-RV500	DKM-RV1000	DKM-RV1600
注射压力 Injection Pressure	bar	2500	2500	1750	1750	1750	1750	1750	2000
注射容积 Injection Volume	cc	180	180	2000	3000	4000	5000	6000	100000
锁模力 Clamping Force	kN	500	1000	2000	3000	4000	5000	10000	16000
开模行程 Mould Opening Stroke	mm	300	300	480	570	600	760	700	700
热板间距 Distance Between Heating Plates	mm	350	360	550	640	700	860	1050	850
最小模厚 Min. Mould Thickness	mm	50	60	70	70	100	100	350	150
热板尺寸 Heating Plate Dimension	mm	450 x 450	500 x 500	500 x 550	650 x 650	700 x 700	800 x 800	1300 x 1300	1800 x 1600
移模行程 Mould Sliding Stroke	mm	—	—	600	650	680	800	1200	1800
系统压力 System Pressure	bar	210	210	225	200	210	220	210	220
机器重量 Machine Weight	Ton	5	6	6.5	8.5	10	14.5	48	95
外形尺寸(长x宽x高) Machine Dim.(L x W x H)	m	1.7x1.6x3.1	1.9x1.6x3.3	3.7x2.2x3.7	3.9x2.4x4.1	3.7x2.45x4.9	3.7x3x5.16	4.9x4.1x5.9	6.9x4x9.3
油泵电机功率 Hydraulic Pump Motor Power	kW	7.5	7.5	11	15	18.5	18.5	30	75
热板加热功率 Heating Plate Power	kW	8	12	14	16	20	20	80	120
总装机功率 Total Power	kW	19	23	29	35	42	42	115	220

如有参数变更, 恕不另行通知。We reserve the right to change any design and specification without notice.

汽配行业 
Automobile Industry

RV-Se 系列/ Series



DKM-RV250B (TPV)



应用领域

适用于TPV,TPE,改性软PVC等为原料, 经过注射成型而制造的制品, 广泛应用于汽车工业。特别适用于注射量精准, 外形尺寸大的车窗TPV整体玻璃包边。

Application

It is suitable for TPV, TPE, flexible modified PVC and other raw materials manufactured by injection molding, widely used in the autoglass encapsulation of industry, especially suitable for the overall TPV glass edge of large size car window with precise injection volume.

产品特点 / Features

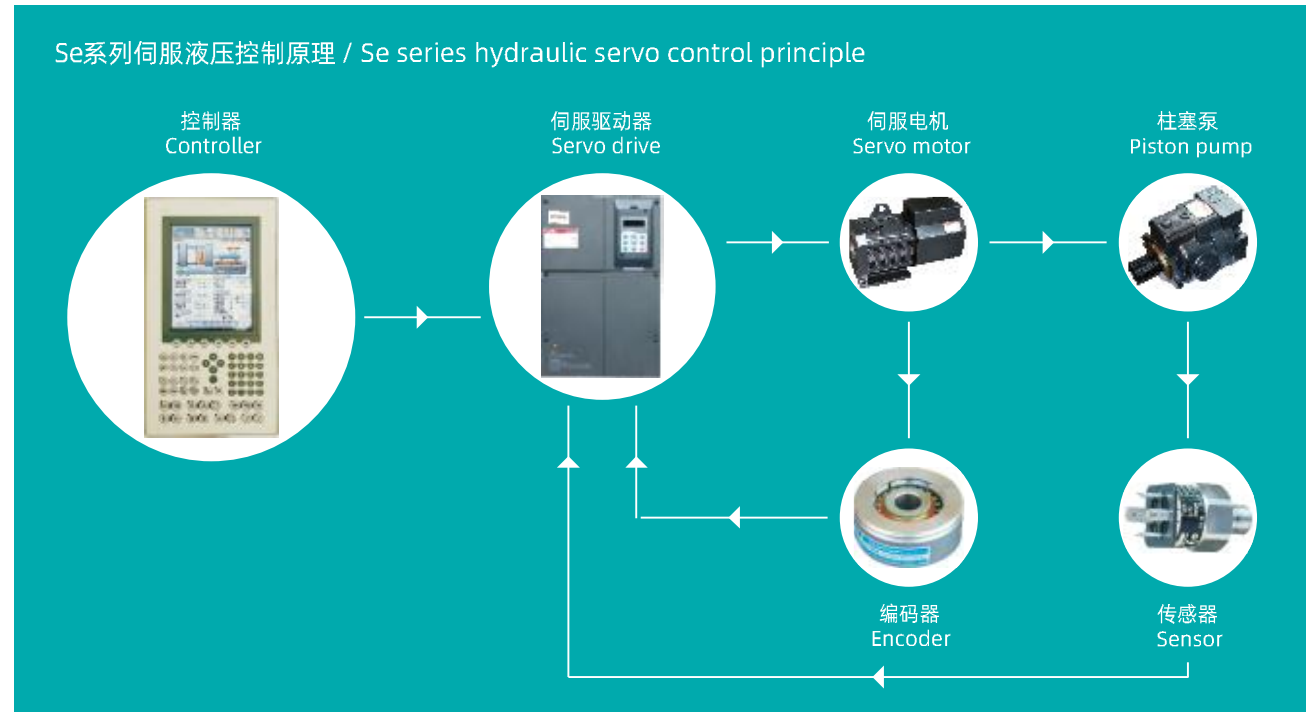
- 胶料更新快: 先进先出立式射台、新胶料在储料腔更新快;
- 操作方便: 下工作台不动、锁模由上模板向下运动, 四柱锁模, 受力均匀。操作平台低;
- 高精度: 伺服电机泵液压控制系统, 注射量精准, 重复注射精度高;
- 节能、低运营成本、低噪音: 完全根据所需的压力和流量输出, 耗电量只有同等比例压力和比例流量控制能耗的60%。
- Quick Material Changing: Equipped with advanced FIFO vertical injection unit and changing injection chamber material can be done within a short period of time.
- Easy Operation: fixed lower platen, moveable upper platen with four columns clamping with even force. Low working platform.
- High precision: Adopting servo motor pump and hydraulic control system to provide precise injection volume, high repeat injection accuracy.
- Energy saving, low operating cost and noise: The output of servo system is completely based on the required pressure and flow of the machine, consuming 60% electricity compared with equal proportional pressure and flow control.

250T-400T玻璃包边机参数

Parameters of 250T-400T injection machine for glass encapsulation

项目 / ITEM		Unit	DKM-RV250B	DKM-RV400B
射胶系统 Injection System	射出压力 injection Pressure	kg/cm ²	1840	1840
	理论射出容量 Theoretical injection volume	cc	546	546
	射出速率 Injection Rate	cc/s	242	242
	螺杆转速 Screw Speed	rpm	213	213
	射嘴接触力 Nozzle Contact Force	tons	5.3	5.3
锁模系统 Clamping system	锁模力 Clamping Force	ton	250	400
	开模力 Mould Opening Force	ton	19	32
	模板尺寸 Platen dimension	mm	1100*1000	1250*1100
	最小模厚 Min. Mould Thickness	mm	400	400
	开模行程 Mould Opening Stroke	mm	600	600
	最大开模距离 Max. Mould Opening Distance	mm	1000	1000
滑模系统 Mould Sliding System	滑模行程 Mould Sliding Stroke	mm	1000	1000
	最大液压力 Max. hydraulic pressure	kg/cm ²	210	210
液压电力系统 hydraulic and electric system	油泵电机功率 Pump Power	kw	46.1	46.1
	电热容量 Electric heating capacity	kw	13.22	13.22
	机器重量 Machine Weight	ton	13	17

Se系列伺服液压控制原理 / Se series hydraulic servo control principle



产品特点 / Features

- 节能、低运作成本**
 伺服系统完全根据所需的压力和流量输出，消除无功耗，耗电量只有同等比例压力和比例流量控制方式能耗的40%。
- 闭环伺服控制，高重复精度**
 专利Se伺服驱动及控制系统，高精度压力传感器及编码器检测，在工作过程中压力、流量实时比较，控制误差由特定的PID控制器处理，控制精度高。
- 高动态响应**
 高性能伺服专用柱塞泵配伺服同步电机，响应快，减速行程短，提高了速度和稳定性。
- 直观式能耗管理**
 可配电子电表，实时电能数据通过B&RS98控制系统综合分析及管理。
- 低噪音**
 整机安静运行，即使是在高压锁模和高压注射的情况下，仍然能给您一个安静的工作环境。
- Energy saving, Low operating cost**
 The output of servo system is completely based on the required pressure and flow of the machine, eliminating the reactive energy consumption, only 40% electricity consumption as comparing with equal proportional pressure and proportional flow control method.
- High repeatability precision**
 Adopting high precision pressure sensor, servo motor, high precision encoder, during operation, the pressure and flow are real time comparison, control error is controlled by specific PID controller.
- Swift dynamic response**
 High performance pump and synchro servo motor, fast response, short deceleration distance, high speed and stability.
- Instant power consumption management system**
 Optional electronic wattmeter, instant power consumption data will be processed by B&RS98 controller for machine performance and production analysis.
- Low noise**
 Creating a quiet environment for you even in the condition of high pressure clamping and injection.

机器参数 / Machine Specifications

项目 ITEM	单位 Unit	DKM-RV50Se	DKM-RV100Se	DKM-RV200Se	DKM-RV300Se	DKM-RV400Se	DKM-RV500Se	DKM-RV1000Se
注射压力 Injection Pressure	bar	2500	2500	1750	1750	1750	1750	1750
注射容积 Injection Volume	cc	180	180	2000	3000	4000	5000	6000
锁模力 Clamping Force	kN	500	1000	2000	3000	4000	5000	10000
开模行程 Mould Opening Stroke	mm	300	300	480	570	600	760	700
热板间距 Distance Between Heating Plates	mm	350	360	550	640	700	860	1050
最小模厚 Min. Mould Thickness	mm	50	60	70	70	100	100	350
热板尺寸 Heating Plate Dimension	mm	450 x 450	500 x 500	500 x 550	650 x 650	700 x 700	800 x 800	1300 x 1300
移模行程 Mould Sliding Stroke	mm	—	—	600	650	680	800	1200
系统压力 System Pressure	bar	210	210	225	200	210	220	210
机器重量 Machine Weight	Ton	5	6	6.5	8.5	10	14.5	48
外形尺寸 (长 x 宽 x 高) Machine Dim.(L x W x H)	m	1.7 x 1.6 x 3.1	1.9 x 1.7 x 3.3	3.7 x 2.2 x 3.7	3.9 x 2.4 x 4.1	3.7 x 2.45 x 4.9	3.7 x 3 x 5.16	4.9 x 4.1 x 5.9
油泵电机功率 Hydraulic Pump Motor Power	kW	11	11	11	14.1	22	22	37.5
热板加热功率 Heating Plate Power	kW	8	12	14	16	20	20	80
总装机功率 Total Power	kW	22	26	29	32	43	43	140

如有参数变更，恕不另行通知。We reserve the right to change any design and specification without notice.

DKM-RV200Se

最先进的伺服驱动液压技术带来橡胶加工行业前所未有的优越价值。

Advanced well-proved servo-driven hydraulic technology giving outstanding benefits and values to rubber processors.





DKM-RC40



应用领域

精密橡胶件，密封条接角，密封件，骨架油封，TPU制品。

Applications

Precise rubber parts, sealing strips, sealing, skeleton oil seal and TPU parts.

产品特点 / Features

- 采用塑化部分与注射部分完全分开的注射系统。
 - 注射量精确，注射嘴可在硫化时提起。
 - “C”型框架式结构，可以方便三面操作。
 - 可选配双工位。
 - 可选配模压转移功能。
 - 可选配高精度伺服阀控制注射系统。
- The plasticized part of the injection system is completely separated from the injected part.
 - Precise injection volume, Nozzle can be lifted during vulcanization.
 - The clamping unit with accessible C-frame structure facilitates the operation in 3 side.
 - Optional for double work station.
 - Optional mould transfer function.
 - Optional for high precision servo valve control injection system.

机器参数 / Machine Specifications

项目 / ITEM	单位 Unit	DKM-RC15		DKM-RC25		DKM-RC25D		DKM-RC40		DKM-RC60		DKM-RC80		DKM-RC120		DKM-RC250	
		Rubber	TPE	Rubber	TPE	Rubber	TPE	Rubber	TPE	Rubber	TPE	Rubber	TPE	Rubber	TPE	Tpe	
注射压力 Injection Pressure	bar	2500	2000/1360 /1000	2500	2000/1360 /1000	2500	2000/1360 /1000	2500	2000/1360 /1000	2500	2000/1360 /1000	2500	1360	1360			
注射容积 Injection Volume	cc	70/98/ 140/190 /250	25/40 /70/125	70/98/ 140/190 /250	25/40 /70/125	70/98/ 140/190 /250	25/40/ 70/125	70/98/ 140/190 /250	25/40 /70/125	70/98/ 140/190 /250	25/40 /70/125	140/250/380	140/250 /380	25/40 /70/125	400/546/800		
锁模力 Clamping Force	kN	150	150	250	250	250		400	400	600	600	800	1200	2500			
开模行程 Mould Opening Stroke	mm	465	465	500	500	500		500	500	500	500	500	500	600			
热板间距 Distance Between Heating Plates	mm	500	500	550	550	550		580	580	590	590	650	820	1100			
最小模厚 Min.Mould Thickness	mm	35	35	50	50	50		80	80	90	90	160	320	500			
热板尺寸 Heating Plate Dimension	mm	350 x 550		450 x 550		400x300		500x 450	500x 450	700x 450	700 x 450	500 x 700	700x600	910 x 850			
系统压力 System Pressure	bar	250	250	250	250	250		250	250	250	250	250	250	250			
机器重量 Machine Weight	Ton	2.2	2.2	2.5	2.5	4		4	4	4.5	4.5	6	8	31			
外形尺寸(长x宽x高) Machine Dim.(L x W x H)	m	1.5 x 1.2 x 3.3		1.8 x 1.3 x 3.4		2.8 x 2 x 3.35		2.3 x 1.2 x 3.4	2.3 x 1.2 x 3.4	2.3 x 1.2 x 3.4	2.5 x 1.3 x 3.4	2.9 x 1.4 x 3.7	3.5 x 4 x 4.5				
油泵电机功率 Hydraulic Pump Motor Power	kW	11	11	11	11	11		11	11	11	11	14.1	14.1	37.7			
热板加热功率 Heating Plate Power	kW	7	—	7	—	10	—	9	—	10	—	7.4	19.6	—	—		
总装机功率 Total Power	kW	21	20	21	20	23		23	22	24	23	30	33.7	52.5			

如有参数变更，恕不另行通知。We reserve the right to change any design and specification without notice.



DKM-RA300



应用领域

适用于硅橡胶、三元乙丙橡胶为原料生产的空心套管绝缘子、棒式绝缘子、避雷器、电缆附件、开关装置。

Applications

Suitable for Silicon Rubber, Ethylene Propylene Diene Monomer (EPDM) to produce hollow core insulator, long rod insulator, surge arrester, cable accessories, and switch gear.

产品特点 / Features

- 专为高电压绝缘子设计的机型。
- 由德国技术顾问参与优化的整个塑化、注射系统，其螺杆具有较大的输送能力、合理的均化能力以及良好的排气效果。
- 进口抗压、耐高温双层隔热板可减少40%的能耗，更可靠，更节能。
- 采用美国高压泵及德国液压阀，保证液压系统的稳定可靠。
- 奥地利B&R控制系统,10.4" 液晶彩色显示屏。
- 注射行程和锁模行程采用精度为0.05%的无接触式电子尺控制。
- Machines are particularly designed for high voltage composite insulators.
- Designing and optimizing of the plasticization system and injection system are led by German engineers, enable the screw better delivering capacity, more reasonable homogenization ability and degassing performance.
- Imported double-layer pressure and high temperature resistance thermal insulation plates reduce 40% energy consumption, much more energy saving and more reliable.
- Adopting American high pressure pump and German hydraulic valve, ensure the stable and reliable hydraulic system.
- Austria B&R control system, 10.4" TFT color screen.
- Imported non-contact linear transducer to control the clamping stroke and injection stroke, with theoretical precision of 0.05%.

机器参数 / Machine Specifications

项目 / ITEM	单位 Unit	绝缘子设备 / RIMM for Rod Insulator						套管设备 / RIMM for Hollow Insulator			
		DKM-RA300	DKM-RA500	DKM-RA800	DKM-RA1000B	DKM-RA1500	DKM-RA650	DKM-RA1000	DKM-RA1600	DKM-RA1800	DKM-RA2400
注射压力 Injection Pressure	bar	1120/1350	1200/1480	1200	1260	1420	1200	1200	1200	1260	1200
注射容积 Injection Volume	cc	5000/ 4000	13000/ 10000	18000	18000	40000	18000	25000	25000x2	25000x2	50000x2
锁模力 Clamping Force	kN	3000	5000	8000	1000	15000	6500	10000	16000	18000	24000
开模行程 Mould Opening Stroke	mm	500	500	500	500	700	700	800	1000	1200	1200
热板间距 Distance Between Heating Plates	mm	710	780	650	880	1050	1200	1160	1500	1600	2000
最小模厚 Min.Mould Thickness	mm	210	280	150 (含冷流道)	380 (含冷流道)	350	500	360	500	400	800
热板尺寸 Heating Plate Dimension	mm	600 x 1000	630 x 1600	800 x 2200	800 x 2600	800 x 3700	800 x 1600	1000 x 1800	1000 x 2600	1000 x 3000	1500 x 3000
系统压力 System Pressure	bar	200	220	210	200	210	210	200	210	210	210
机器重量 Machine Weight	Ton	10	19	30	36	65	24	45	95	100	160
外形尺寸 (长 x 宽 x 高) Machine Dim.(L x W x H)	m	4.3x1.9x3.3	5.65x3x3.8	6.5x5.8x3.2	6.7x6.1x3.3	8.7x8x4	5.7x2.8x3.95	6.9x5.2x4.5	8.1x7.5x5.1	8.1x7.5x5.1	8.6x9x5.6
油泵电机功率 Hydraulic Pump Motor Power	kW	15	22	30	34	64	31	41	68	68	105
热板加热功率 Heating Plate Power	kW	25	36	100	120	133	60	80	120	120	180
总装机功率 Total Power	kW	45	67	147	167	212	110	150	220	220	320

如有参数变更，恕不另行通知。We reserve the right to change any design and specification without notice.



应用领域

适用于固态硅橡胶为原料生产的高压棒式绝缘子、空心套管、避雷器、电缆附件、开关装置。

Applications

Suitable for HTV silicone rubber to produce long-rod insulators, hollow core bushings, arresters, cable accessories and switch gear.

产品特点 / Features

- 专为高压绝缘子设计的机型。
- 上开合模式结构，大大降低操作高度，操作方便舒适。
- 锁模机构设计安全合理，卡块式锁模，使重心始终在机器锁模结构的几何中心，保证机器运作平稳可靠；开模到位时，锁卡自动卡上保护，做到机械、液压、电器3层保护。
- 采用液压调节模厚，调模方便，在换不同模厚的模具时，方便精准快捷。
- 由德国技术顾问参与优化的整个塑化、注射系统，使其螺杆具有较大的输送能力、合理的均化能力以及良好的排气效果。
- 德国进口耐高温双层隔热板可减少40%的能耗损失，更可靠节能。
- 奥地利B&R控制系统，10.4寸液晶彩色显示屏，操作简易，更人性化。
- Machines are particularly designed for high-voltage composite insulators.
- The upper mold open structure, largely reduce operation height, more convenient and user-friendly for operation.
- The designing of clamping unit is reasonable and secure, adopting Block-type clamping style to keep the gravity on the clamping center which ensure the machine work stably. While opening the mould to limitation, the Block will be immediately closed automatically, which ensure to protect the machine mechanical, hydraulic and electrical parts effectively.
- Adopting hydraulic block to adjust mould height during exchanging
- different moulds, easier quicker, and more accurate operation. The designing and optimizing of the plasticization system and injection system are led by German engineers, enable the screw with a better delivering capacity, more reasonable homogenization ability and better venting performance.
- Germany imported double-layer high temperature resistance thermal insulation plates reduce by 40% energy consumption, more reliable and more energy-saving.
- Austria B&R controller system, 10.4" TFT color screen, easier for operation, more user-friendly.

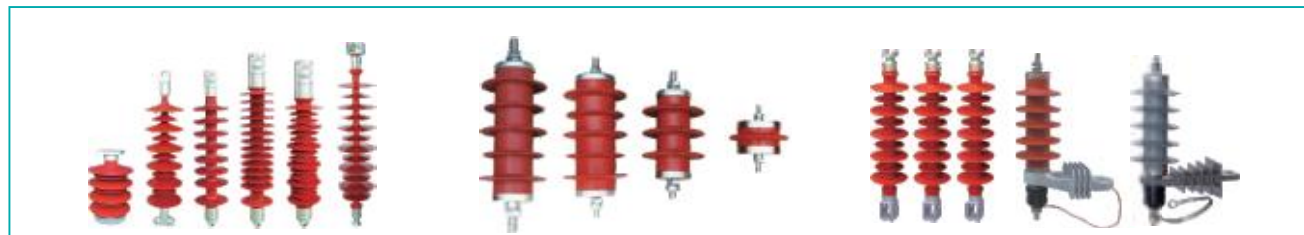
机器参数 / Machine Specifications

项目 / ITEM	单位 Unit	绝缘子成型机 RIMM for Rod Insulator		套管成型机 RIMM for Hollow Core Insulator	
		RT560	RT1100A	RT1200B	RT1500
注射压力 / Injection Pressure	bar	1200	1200	1200	1200
注射容积 / Injection Volume	cc	13000	25000	40000	40000/50000
螺杆直径 / Screw Dia.	mm	65	90	90	90
锁模力 / Clamping Force	kN	5600	11000	12000	15000
开模行程 / Mould Opening Stroke	mm	700	800	1600	700
热板间距 / Distance Between Heating Plates	mm	940	1080	2200	1050
最小模厚 / Min.Mould Thickness	mm	280	280	600	350
热板尺寸 / Heating Plate Dimension	mm	1600 x 630	2700 x 800	2000 x 1500	3600 x 830
系统压力 / System Pressure	bar	210	210	210	210
机器重量 / Machine Weight	Ton	20	49	70	72
外形尺寸(长x宽x高) / Machine Dim(LxWxH)	m	5.65 x 3 x 3.8	6.9 x 4.3 x 3.9	11.8 x 6.3 x 7.4	8.9 x 7.6 x 4.6
油泵电机功率 / Hydraulic Pump Motor Power	kW	22	37+ 4	37+ 4	37+4
热板加热功率 / Heating Plate Power	kW	36	90	120	133
总装机功率 / Total Power	kW	68	146	176	210

如有参数变更，恕不另行通知。We reserve the right to change any design and specification without notice.



DKM-RI300



应用领域
普通绝缘子与橡胶制品。

Applications
General insulators and rubber products.

产品特点 / Features

- 经济实用型设备，可以三面操作，特别适合做长制品，如绝缘子、避雷器。
 - 油缸直接注压式送料，结构简单，容易操作。
 - 合模油缸双重密封，不易漏油。
 - 全部采用德国液压阀，精度高，寿命长。
 - 西门子控制系统，5.7" 显示屏，友好人机界面。
 - 可选配双工位。
- Economical and practical, enable to be operated in 3-side, suitable for long products, such as insulators, arrestors.
 - Directly feeding by hydraulic cylinder, simple structure, easy to operate.
 - Dual-seal clamping cylinder, avoids oil leakage.
 - German hydraulic valves ensure high precision and long lifetime.
 - Siemens control system, user-friendly interface.
 - Double station option.

机器参数 / Machine Specifications

项目 / ITEM	单位 / Unit	DKM-RI200	DKM-RI200FD	DKM-RI300	DKM-RI300FD
注射压力 / Injection Pressure	bar	800	800	800	800
注射容积 / Injection Volume	cc	2000	2000 x 2	4000	3000 x 2
锁模力 / Clamping Force	kN	2000	2000	3000	3000
开模行程 / Mould Opening Stroke	mm	480	480	350	350
热板间距 / Distance Between Heating Plates	mm	600	600	850	850
最小模厚 / Min. Mould Thickness	mm	120	120	200	200
拉杆净距 / Clear Distance Between Columns	mm	590 x 270	590 x 270	710 x 660	710 x 660
热板尺寸 / Heating Plate Dimension	mm	500 x 800	500 x 800	610 x 990	610 x 990
系统压力 / System Pressure	bar	225	225	250	250
机器重量 / Machine Weight	Ton	4.8	6.5	7	12
油泵电机功率 / Hydraulic Pump Motor Power	kW	11	11	11	11
热板加热功率 / Heating Plate Power	kW	14	28	24	48
总装机功率 / Total Power	kW	25	39	35	59

如有参数变更，恕不另行通知。We reserve the right to change any design and specification without notice.



空心套管绝缘子方案表 / Hollow Insulator Solution Table

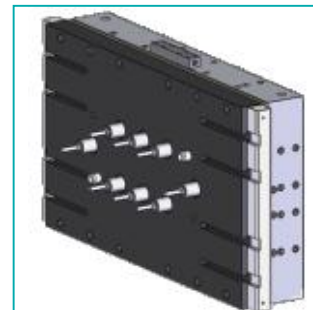
机型 / Machine Model	DKM-RA650		DKM-RA1600			DKM-RA2400	
锁模力 / Clamping Force(T)	650		1600			2400	
绝缘子 / Insulator(KV)	66	110	110	220	330	220/330	550
成型次数 / Moulding Step	1	1	1	1	2	1	2
模腔数 / Mould Cavity	1	1	1	1	1	1	1

如有参数变更，恕不另行通知。We reserve the right to change any design and specification without notice.

棒式绝缘子方案表 / Rod Insulator Solution Table

机型 / Machine Model	DKM-RA300			DKM-RA560 / RT560					DKM-RA1200 / RT1200A					
锁模力 / Clamping Force(T)	300			500					1200					
绝缘子 / Insulator(KV)	11	25/23	66	11	25/23	66	132	220/230	400	500	220/330	400	500	1000
成型次数 / Moulding Step	1	1	1	1	1	1	1	2	3	4	1	2	2	4
模腔数 / Mould Cavity	16	6	2	16	16/8	2	2	2	2	2	2	2	2	2

如有参数变更，恕不另行通知。We reserve the right to change any design and specification without notice.



八嘴冷流道 / 8 Nozzles CRB

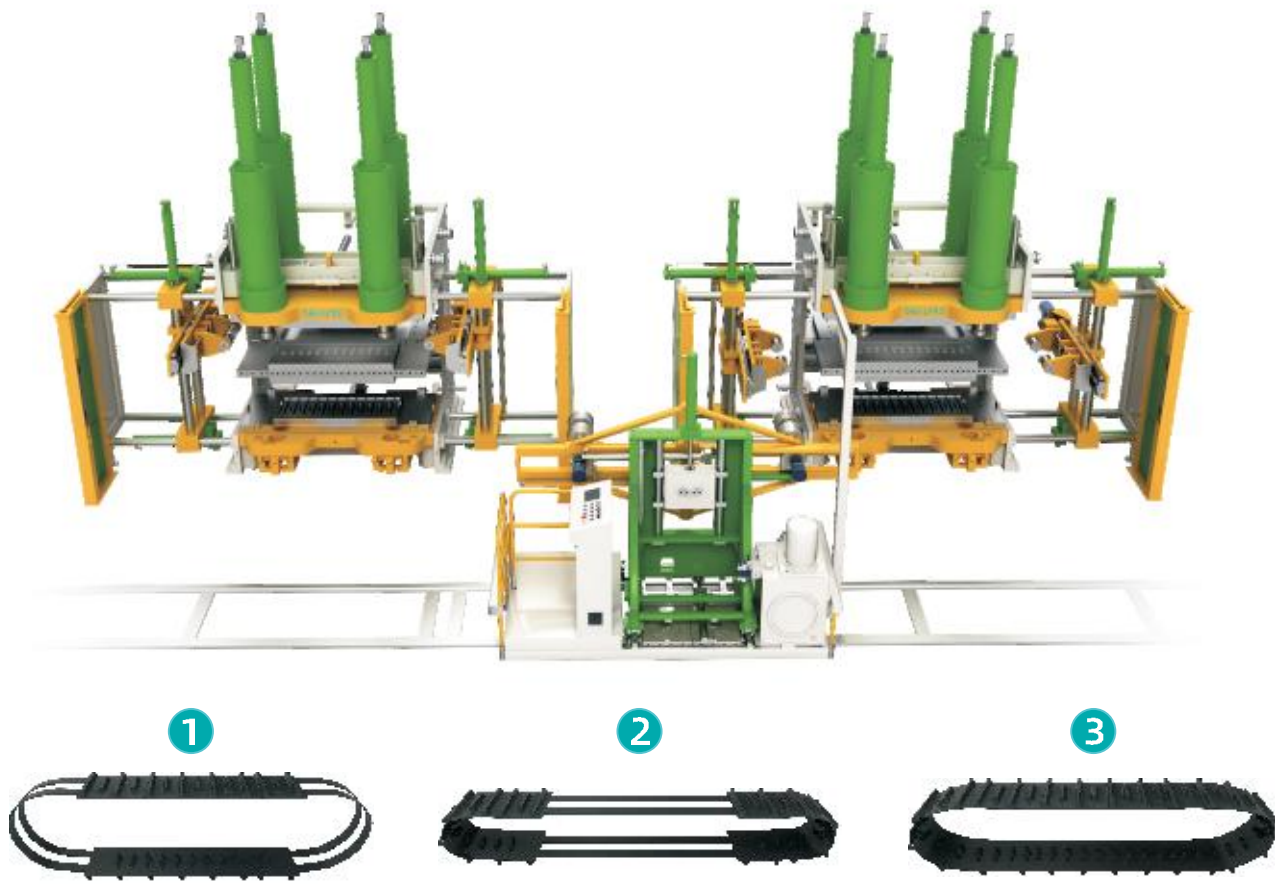
橡胶履带机
Rubber Track Production Line

应用领域

适用于农用车履带、工程车履带、军用车履带、雪地车三角履带等。

Applications

Suitable for agriculture tracks, construction tracks, military tracks and snowmobile tracks.



DKM-RC280



产品特点 / Features

- **高度自动化:** 繁重的工作由机器自动完成, 大幅降低工人劳动强度。相比传统机器可以节省约50%人工;
- **提升质量:** 高度自动化减少人工误差导致的质量不稳定, 锁模硫化单元和自动张紧钢带装置合理结合, 生产的橡胶履带寿命提高30%~50%;
- **节能环保:** 巧妙设计的硫化停机和良好的保压功能, 在橡胶长时间硫化过程中主电机自动停止运转, 减少电力耗费;
- **智能监控:** 可溯源生产工艺参数, 有助于后期不断完善产品生产工艺;
- **不断迭代:** 产品持续畅销多年, 经过多年的不断迭代, 设备功能设计更加完善与合理, 维护更简单便捷。
- **High automation:** Machines handle heavy tasks, significantly reducing labor intensity. Save about 50% labor force compared to traditional machines.
- **Improve quality:** Automation reduces human errors, increasing rubber track lifespan by 30%-50% through reasonable integration of mold clamping unit and constant steel cord tension device.
- **Energy-efficient:** Clever curing shutdown reduces power consumption by automatically stopping the main motor during long rubber vulcanizing processes.
- **Smart monitoring:** Trace production parameters for quality issues, being helpful to continuously improve the production process.
- **Continuous iterating:** Years of continuous iteration, the functions of the equipment is more perfect and powerful, maintenance is more simple and convenient.

机器参数 / Machine Specifications

项目 /ITEM	单位 Unit	DKM -RC200	DKM -RC280	DKM -RC360	DKM -RC480	DKM -RC520	DKM -RC650	DKM -RC900
锁模力 Clamping Force	Ton	200	280	360	480	520	650	900
热板尺寸 Heating Plate Dimension	mm	1200 x 650	1550 x 640	1700 x 640	1960 x 750	2050 x 750	2050 x 1050	2500 x 1050
最小模厚 Min.Mould Thickness	mm	100	150	120	150	120	180	180
履带最大宽度 Max.Width of Track	mm	150~500 (小于230时做 一出二)	450	500	550	600	915	915
硫化履带规格(长度) Range of Track	mm	2500-3800	3780-4860	4140-5350	4800-6400	5040-6800	6400-11300	8000-12000
系统压力 System Pressure	bar	210	210	210	210	210	210	210

如有参数变更, 恕不另行通知。We reserve the right to change any design and specification without notice.

RH系列橡胶机密封圈专用机

RH Series Rubber Injection Machine Dedicated for Sealing Ring



产品特点 / Features

- 专为小型橡胶密封件设计的机型;
- 配置自动毛刷, 用于取制品和清洁模具, 实现全自动化生产;
- 伺服油泵电机液压系统, 控制精度高, 减低能耗;
- 先进先出注射系统, 确保无老化胶;
- 超高压注射系统, 确保胶料注射在最短的时间完成;
- 使用橡胶冷流道技术, 减小流道胶料浪费, 改善流道不平衡影响;
- 注射系统镶入模板中, 最大限度缩短注射流程。
- A model specially designed for small rubber seals;
- Equipped with automatic brushes for fetching products and cleaning molds. High production efficiency;
- Servo oil pump motor of hydraulic system, high control precision and energy saving;
- First-in, first-out injection system to prevent over-vulcanization of rubber;
- Ultra-high pressure injection system to ensure the injection is completed in a short time;
- Use cold runner mold technology to reduce the waste of rubber in the runner and improve the imbalance of the runner;
- The injection system is embedded in the template to minimize the injection path.

应用领域 / Applications

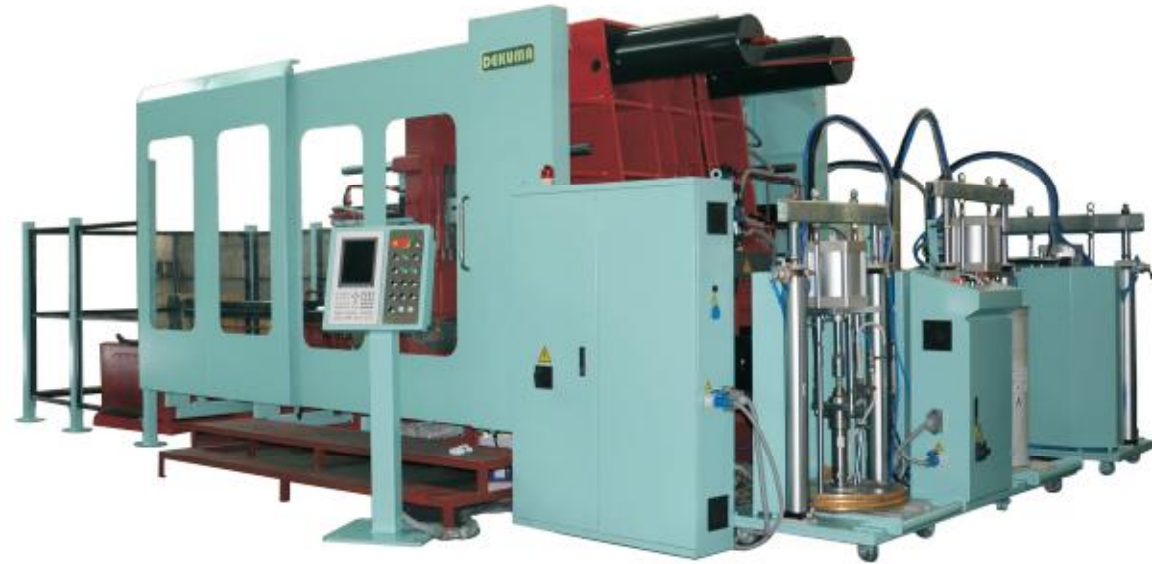
适用于生产天然橡胶, 丁腈橡胶或氟橡胶的密封圈
Suitable for sealing rings made of natural rubber, nitrile rubber, or fluoro rubber



机器参数 / Machine Specifications

名称 ITEMS	单位 unit	DKM-RH100	DKM-RH200	DKM-RH300	DKM-RH450
注射压力 Injection Pressure	kg/cm ²	2100	2500	2100	2000
注射容积 Injection Volume	C.C.	180	500	1000	2000
螺杆直径 Screw Diameter	mm	25	25	32	40
锁模力 Clamping Force	kN	1000	2000	3000	4500
开模行程 Mould Open Stroke	mm	450	450	450	500
热板间距 (带冷流道) Heating Plate Distance (With CRB)	mm	510	510	550	1080
最少模厚 (带冷流道) Min Mold Thickness (With CRB)	mm	60	60	100	240
拉杆净距 Tie-Bar Distance	mm	530x470	580x580	580x580	800x750
热板尺寸 Heating Plate Dimension	mm	500(上下)x500(前后)	550x550(前后)	550x550(前后)	750(上下)x800(前后)
系统压力 System Pressure	bar	210	210	250	250
机器重量 Machine Weight	ton	6	7.5	11	14.2
外形尺寸(长X宽X高) Machine Dim.(LxWxH)	m	4.0x1.2x3.9	4.8x1.7x4.3	5.7x1.7x4.3	6.39x1.96x2.13
油泵电机功率 Hydraulic Pump Power	kW	11	11	16	37
热板电功率 Heating Plate Power	kW	12	16	16	24
总装机功率 Total Power	kW	29	33	40	66.5

液态硅橡胶制品 
Liquid Silicone Rubber Product



产品特点 / Features

- 采用贝加莱S98精明控制系统和世界名牌电器元件，有效控制电气部分小故障,10.4寸彩色显示屏，友好人机界面；
 - 具有专利的同步计量装置可连续计量，能适应不同制品对橡胶注射量的要求；
 - 进口高质量静态混合器，确保A、B料充分均匀混合。
- S98 smart B&R control system and the world famous brand electrical components, effectively guarantee small fault of the electrical parts; 10.4-inch color display, friendly man-machine interface;
 - The patent synchronized dosing device can be continuously measured and able to adapt to the requirements of different products on rubber injection volume;
 - Imported high-quality static mixer to ensure an even mixture of material A and B.

机器参数 / Machine Specifications

项目 / Item	单位 / Unit	LSR-V50	LSR-V100	LSR-V200	LSR-H160	LSR-H250	LSR-H400
螺杆直径 Screw Diameter	mm	—	—	—	—	—	—
注射压力 Injection Pressure	cc	125	200	320	—	—	—
理论注射容积 Theoretical Injection Volume	Mpa	120	120	120	—	—	—
注射速率 Injection Rate	cc/sec	166	240	240	—	—	—
射胶行程 Injection Stroke	mm	—	—	—	—	—	—
锁模力 Clamping Force	Ton	50	100	200	160	250	400
模板最大间距 Max.Daylight	mm	500	600	800	1600	1900	2600
锁模行程 Clamping Stroke	bar	300	480	600	1200	1500	2000
四柱间距 Distance Between Tie Bars	mm	440 x 300	705 x 500	920 x 560	—	—	—
容模空间 Mould Space	mm	400 x 400	600 x 600	800 x 800	300 x 1600	1250 x 2000	1500 x 3000
最小模厚 Min.Mould Thickness	mm	200	200	200	400	400	600
顶针力 Ejector Force	Ton	—	—	—	11	15	15
顶针行程 Ejector Stroke	mm	—	—	—	400	400	500
主马达功率 Major Motor Power	kW	11	15	22	15	15	22
系统压力 System Pressure	Mpa	20	20	20	20	20	20
电热功率 Heating Power	kW	6	14	24	—	—	—
机器重量 Net Weight	Ton	4	6	10	—	—	—

如有参数变更，恕不另行通知。We reserve the right to change any design and specification without notice.



应用领域

电子配件、电力绝缘子、避雷器、电缆附件、密封件、婴儿用品、食品器具、厨房用品及体育用品等。

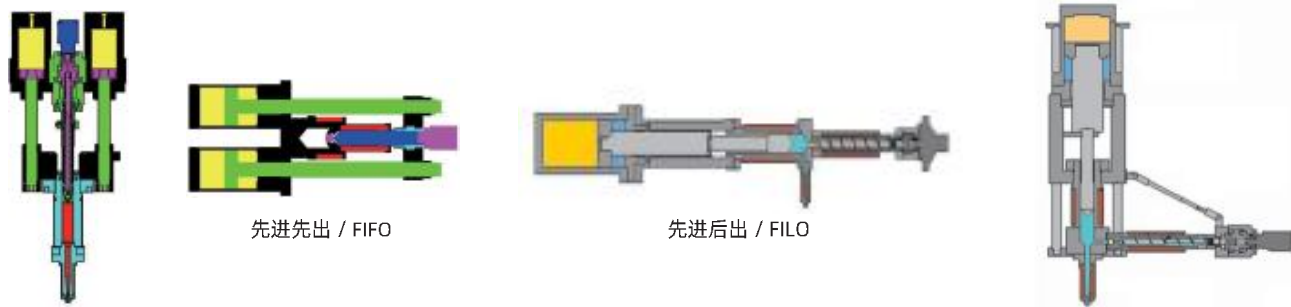
Applications

Electronic components, insulator, arrester, cable accessories, sealings, infant care, food container, kitchen articles and sports industry, etc.

客户方案 Solutions For Customers

塑化 & 注射系统 / Plasticizing & Injection System

- 由德国技术顾问参与优化的整个塑化、注塑系统。
- 塑化结束前，螺杆减速；可快速拆卸注射柱塞。
- 三个独立可调压力、速度的注射区域；三个可独立调节压和速度的保压区域。
- The plasticizing and injection unit are optimized by German technical consultants.
- Screw speeds down before plasticizing over, injection piston is easy to be disassembled.
- 3 separated injection zones with pressure and speed adjustable, 3 dwell zones with pressure and speed adjustable.



锁模系统 / Clamping System

- 主要受力零件采用有限元分析，确保零件刚性大。
- 三个独立可调压力、速度的合模区域；可调节压力的低压保护和高压保护设置。
- 多次排气动作设置，行程精确。
- Finited element stress analysis for all key parts ensures the max. rigidity of the parts.
- 3 separated clamping zones with pressure and speed adjustable; low pressure and high pressure adjustable protection device.
- Multi-degassing motion setting, precise clamping stroke.



电气&液压控制系统 / Electric and Hydraulic Control System

- 采用专业工控电脑和专用软件控制，电器元件全部采用世界名牌产品。
- 采用德国原产比例流量、压力控制阀，方向阀，机器动作平稳，无渗漏，无误差动作，使用寿命长，无外渗漏。
- Specialized industrial computer and software control; all electric and electronic components are well-known international brands.
- Original German proportional flow rate valve, pressure valve, and direction valve guarantee the machine with smooth movement, no leakage, no wrong movement, world famous sealing parts, durable, and without outer leakage.



温度控制系统 / Temperature Control System

- 塑化料筒温度与注射料筒温度分别采用各自独立的温油导热系统进行不同温度控制，能确保温度控制精确。
- Separate heat transfer oil system for plasticizing and injection barrel to realize different temperature control and ensure precise temperature control.

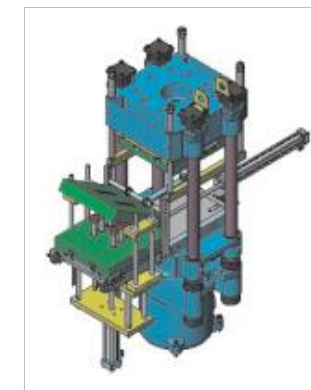
客户方案 Solutions for customers

设备采用模块化设计，可根据客户不同制品、不同生产工艺需求选配各种设备装置，保障生产效率最大化。

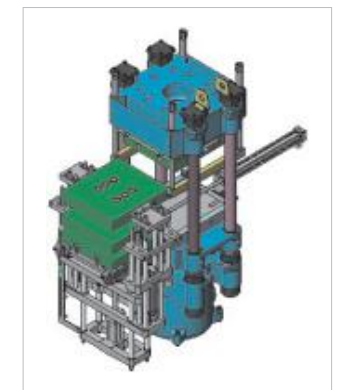
The machine adopts modular design. All kind of options can be selected per customer's different articles and different process needs, which guarantee the max. production efficiency.



移模单层顶出
Sliding & Single-layer Ejecting



移模单层顶出翻模
Sliding & Single-layer Ejecting & overturn



移模双层顶出
Sliding & Double-layer Ejecting

装置名称 / Device name	RV	RA	RC	RI
机械吊模装置 / Upper Mechanical Mould Lifting Device	●	●	●	●
液压吊模装置 / Upper Hydraulic Mould Lifting Device	●	●	●	●
机械托模装置 / Lower Mechanical Mould Holding Device	●	●	●	●
液压托模装置 / Lower Hydraulic Mould Supporting Device	●	●	●	●
中模移出装置 / Mid Mould Sliding Device	●	●		●
下模移出装置 / Lower Mould Sliding Device	●	●	●	●
单层顶出装置 / Single-layer Ejecting Device	●	●	●	●
双层顶出装置 / Double-layer Ejecting Device	●	●		●
单层上顶出装置 / Single-layer Upper Ejecting Device	●	●	●	●
翻模装置 / Mould Tick-rack Device	●	●		●
硅胶送料装置 / Silicon Rubber Feeding Device	●	●	●	
冷流道装置 / Cold Runner Device	●	●	●	
冷流道用温油控制装置 / Cold Runner With Heat Transfer Oil Device	●	●	●	
全封档门 / All Round Cover	●	●	●	
真空泵 / Vacuum Pump	●	●	●	●
Ce认证 / CE Safety Standards	●	●	●	●

可根据客户制品要求提供非标或专用橡胶成型设备。

Either non-standard or specially designed rubber injection moulding machines can be provided per customer's article requirements.

iSee 智能管理云平台
iSee Intelligent management cloud platform



iSee的由来 / The Origin of iSee

iSee4.0智能管理云平台，是CML集团自主研发的计算机软件系统。
The iSee4.0 Intelligent Management Cloud System is self-developed by CML group.

主要功能 / Main functions

收集、分析和监控设备数据，从而让经营决策者能随时随地系统全面地了解机器状态，制定精准的生产计划和公司策略。
The machine data will be collected, analysed and monitored, and the company managerial decision maker can apply the accurate production plant and company strategy after fully gaining the machine status anytime anywhere.

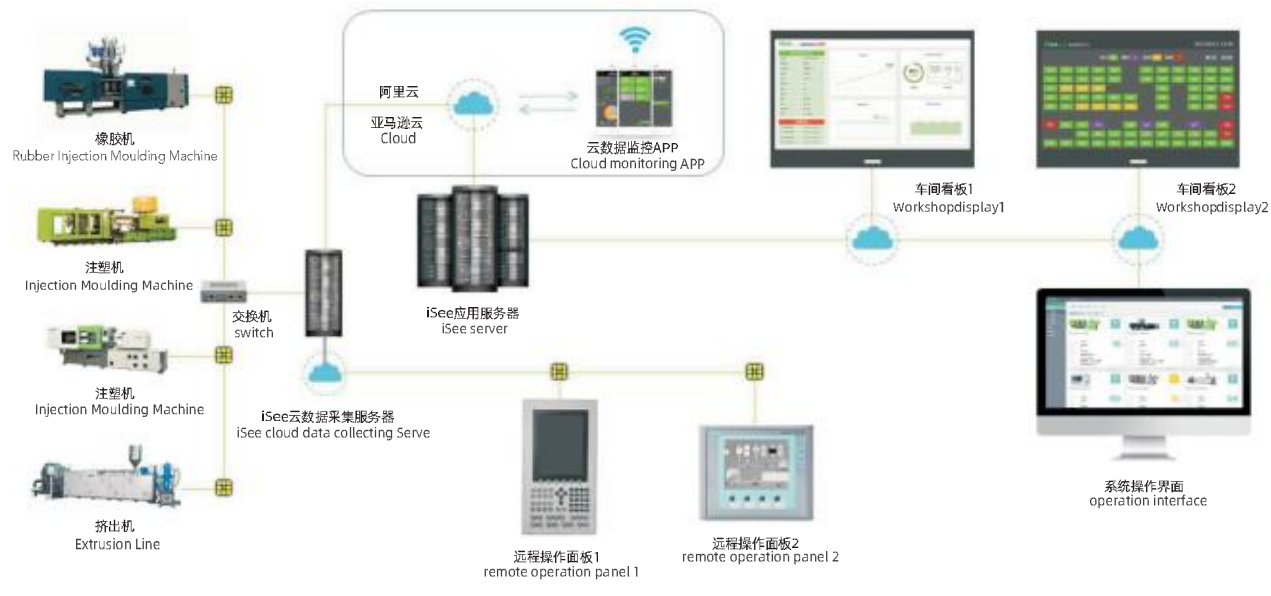
适用范围 / Scope of application

适用任何开放接口的机器。
Applicable to any machine of interface access-free.



iSee网络架构图 / iSee Network Structure chart

对于不上云的客户也可在局域网内实现
It can be implemented in the LAN for the non-cloud customers.



iSee功能模块 / ISee SPC

整体功能
Overall function



设备总览 / Equipment Overview
显示所有机器：名称、状态、实时数据、生产进度、设备利用率等重要参数
To display the important data of all machine: machine ID, status, real-time data, production schedule and machine on duty rate etc.

车间看板 / Workshop Display
状态看板、生产看板、综合看板、spc看板
status display, production display, general display, SPC display

生产分析 / Production Analysis
显示机器：名称、状态、模具、产品名称、目标量、完成率、预计完成日期、设备利用率等详细参数
to show the data of machine: Machine ID, status, mould ID, product ID, target quantity, finished rate, expected time to finish, machine on duty rate etc.

分析报表 / Analysis Report
包含：设备SPC比较、设备能耗分析。可对比相同参数的差异，从而改善工艺
including: machine SPC comparison, machine energy consumption comparison. The production process can be improved after comparing the difference on the same parameter.

排产管理 / Production Management
包含：工单导入、工单分析、生产追溯、生产管理
including: production order importing, production order analysis, production trace back, production management

iSee的投资效益分析 / Investment Benefit Analysis of iSee



公司简介 Company profile



中国高端橡塑机械行业领导者 Leading rubber and plastic machinery manufacturer of China

全球知名的橡塑科技方案供应商

在全球，德科摩为顾客提供整套橡胶技术及挤出技术的交钥匙方案。1997年大同机械（香港大同机械企业有限公司全资子公司）研发并推出公司第一台橡胶注射成型机，并于2004年与德国Dekuma GmbH战略合资成立德科摩。多年来我们始终专注于橡胶注射成型机、管材挤出生产线、液压机的研发、生产、销售。产品广泛应用于汽车零部件、建筑材料、能源输送、电子通讯等领域。以卓越超前的技术及专业快速的服务，本着为客户创造最大价值的使命，并矢志成为世界橡塑设备方案的领先品牌。

秉承德国技术标准，产品精益求精

德科摩产品始终秉承德国技术标准，核心部件均由德国工程师主导设计，且所有原材料的选用及加工流程都严格遵循德国标准，从而使德科摩的产品均具有极高的可靠性及稳定性。经过多年的发展和经验的不断积累，德科摩持续深挖行业专用市场，为客户提供行业定制专用设备。产品的技术、质量与服务均明显领先于国内同行，成为替代进口品牌的品质之选。

Globally Renowned Rubber And Plastics Technology Solution Supplier

Globally, Dekuma offers customers a complete turnkey solution for rubber injection moulding technology and extrusion technology. In 1997, Cosmos Machinery, a wholly-owned subsidiary of Cosmos Machinery Enterprises Limited in Hong Kong, developed and launched the company's first rubber injection molding machine. In 2004, Dekuma Rubber and Plastic Technology (Dongguan) Ltd emerged as a strategic joint venture between Cosmos and Germany's Dekuma GmbH. For many years, we have been focusing on the development, production and sales of rubber injection moulding machines, pipe extrusion lines and hydraulic presses. Products have been widely used in automotive parts, building materials, energy transportation, telecommunications and other fields. With excellent advanced technology and professional and fast service, we are committed to creating the greatest value for our customers, and we are determined to become the leading brand of rubber and plastic equipment solutions in the world.

Adhering to Germany technical standards, constantly perfecting products

Dekuma products always adhere to the Germany technical standards, the core components are designed by German engineers, and all raw materials are selected and processed in strict accordance with German standards, so that Dekuma products have high reliability and stability. After years of development and continuous accumulation of experience, Dekuma continues to dig deeply into the industry-specific market to provide customers with customized equipment for the industry. The technology, quality and service of the products are clearly ahead of the Chinese counterparts and become the quality choice for replacing those world famous brands.

德国基因 中国智造 Chinese Creation Of German Heritage

产品及服务遍及全球、享誉全球

目前，德科摩已有完善的能满足不同客户需求的各类专家团队，数十项国家专利，并承担多项政府研发公关项目，自2013年起被评为国家高新技术企业。超大型化、高精度、高效、智能化、自动化、专用化是公司各类产品的主要特点及业务发展方向。公司长期与多家国际知名橡塑设备供应商保持良好的合作关系，产品遍布欧美、拉美、中东、东南亚等数十个国家，广泛应用于汽车零部件、建筑材料、能源输送、电子通讯等不同领域，并助力各个行业技术革新及生产工艺的快速发展。我们将紧跟行业趋势与市场变化而不断自我创新，持续为国内外客户提供智能化、自动化、专业化程度更高的整体解决方案，将DKM打造成为值得信赖的世界一流品牌。



Products and services are spreaded and renowned worldwide

At present, Dekuma has a comprehensive team of experts who can meet the needs of different customers, dozens of national patents, and undertake a number of government R&D public relations projects. Since 2013, it has been rated as a national high-tech enterprise. Ultra-large size, high precision, high efficiency, intelligence, automation and specialization are the main features of the company's various products and business development direction. The company has long maintained good cooperative relations with many internationally renowned rubber and plastic equipment suppliers. Its products are distributed in dozens of countries in Europe, America, Latin America, Middle East and Southeast Asia. It is widely used in auto parts, building materials, energy transportation, telecommunications, etc. The field and the rapid development of technological innovation and production processes in various industries. We will continue to innovate in keeping with industry trends and market changes, and continue to provide intelligent, automated and professional solutions to domestic and international customers, and build DKM into a world-class brand that can be trusted.

